



**ÇUKURDERE  
SONDAJ**



[www.cukurderesondaj.com.tr](http://www.cukurderesondaj.com.tr)

## **ÇUKURDERE DRILL**

It was established in 2015 to provide professional service to the mining sector with its knowledge, experience and expertise. Its aim is to use machinery and equipment suitable for today's technology to maximize efficiency with more economical projects and its high-quality and professional staff. It carries out its projects by adopting principles on health, work safety and environment.

**ÇUKURDERE DRILL** operates to achieve its goals

Responsible for successfully completing the project to high standards. It attaches great importance to the development of society and lifestyle in the region where it operates and to maintaining respectful relations with local employees.

### **Our main goals are;**

- >Customer-oriented and trust-based quality service,
- >Continuous increase in efficiency in technical and management services provided,
- >Increasing work safety and zero accidents,
- >Environmentally sensitive work and planning,
- >Development and establishment of cooperation and teamwork,
- >Establishment of high efficiency and quality awareness,
- >The goal of reaching more beautiful and perfect.



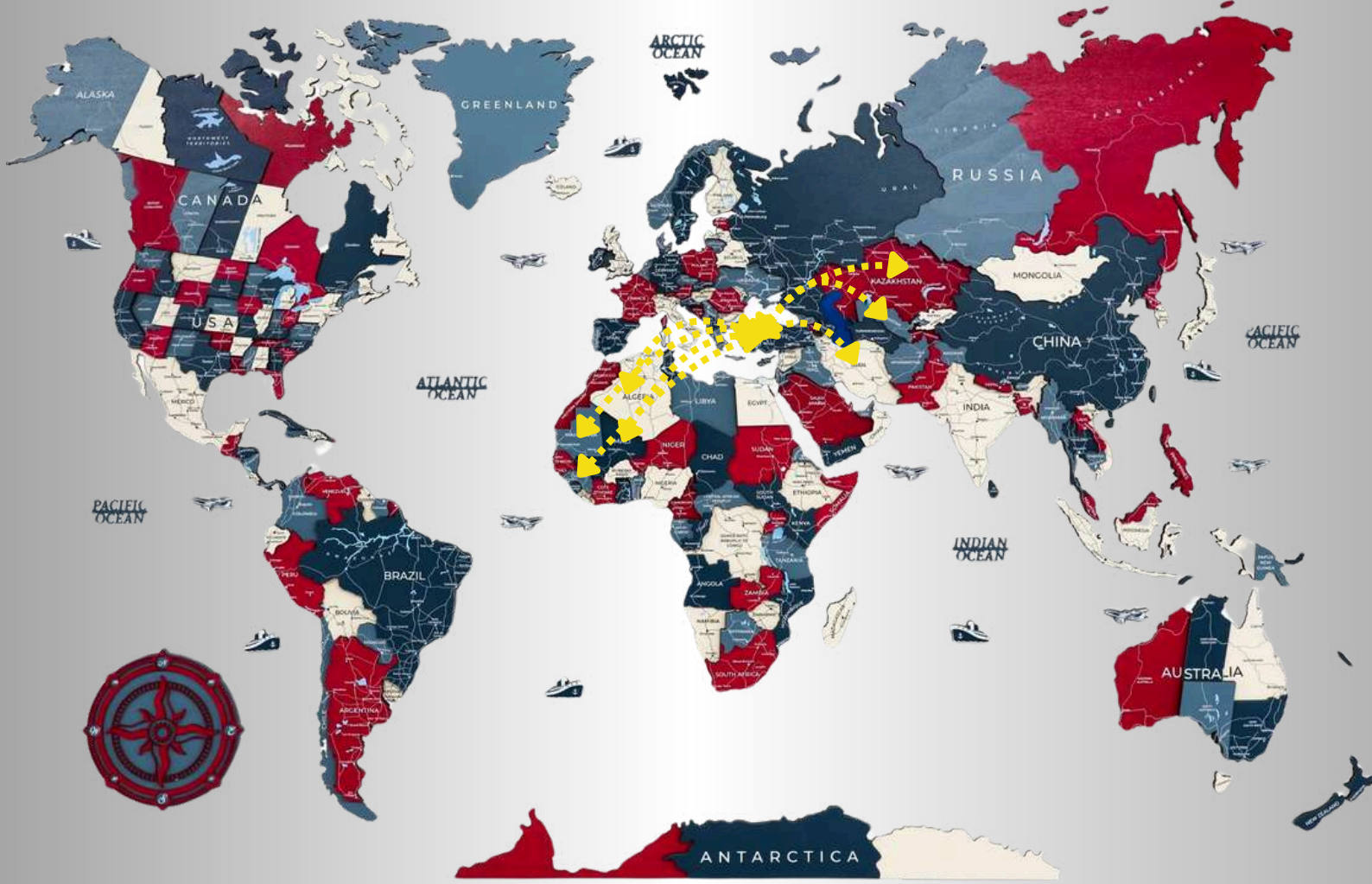


YEAR 1991



From Generation  
to Generation





**WHERE ARE WE IN THE  
WORLD?**



## Core

Core drilling provides critical information in many areas such as geology, mining, engineering and ground surveys. Core samples enable detailed analysis of geological structures in the field.

**ÇUKURDERE DRILL** is committed to keeping core drilling efficiency at the highest level in national and international standards.







Cukurdere Drill

**ÖNCELİĞİMİZ**  
**SAĞLIK VE GÜVENLİĞİDİR**  
**HEALTH AND SAFETY IS OUR PRIORITY**

**SAĞLIK VE GÜVENLİK İÇİN İŞ YERİNDE YAPILAN İŞLER İÇİN UYGUN OLARAK**  
**FOR WORK DONE IN THE SITE, THE USAGE OF**

- GÖZLÜK  
SAFETY GLASSES
- KULAKLIK  
EAR PROTECTOR
- İŞ AYAKKABISI  
SAFETY BOOTS
- EMNİYET KEMERİ  
SAFETY BELT

**ÇEVRE KORUMAK ZORUNLUDUR**  
**IT IS MANDATORY TO PROTECT THE ENVIRONMENT**

**ÇEVREMİZİ KORUYALIM**  
**WE WILL PROTECT OUR ENVIRONMENT**

**ÇEVRESEL GİRİŞLERE KAPALIDIR**  
**ENVIRONMENTAL ENTRY IS PROHIBITED IN THIS SITE**

**SAĞLIK VE GÜVENLİK İÇİN GEREKLİ İŞ GÜVENLİĞİ MALZEMELERİNİ ŞANTIYE GÖREVLİDEN TEMİN EDİNİZ VE KULLANINIZ.**  
**FOR SAFETY AND HEALTH, OBTAIN THE NECESSARY SAFETY EQUIPMENT FROM THE RESPONSIBLE PERSONNEL AT THE SITE AND USE THEM.**

**YERİNDEKİ KESİCİ, DELİCİ VEYA ZARAR VERİCİ NESNELERE, KEMER, ELEKTRİK, GAZ VE KİMYASALLARA, ARAÇ VE MAKİNALARA DİKKAT EDİNİZ.**  
**BE CAREFUL OF CUTTING, PUNCTURING OR DAMAGING OBJECTS, OBSTACLES AND POTHOLES, ELECTRICITY, GAS AND CHEMICALS IN THE SITE.**

**SAĞLIK VE GÜVENLİK İÇİN HİÇBİR CİHAZ, ALET VE TEÇHİZATA DOKUNMAYINIZ.**  
**FOR SAFETY AND HEALTH, DO NOT TOUCH ANY EQUIPMENT THAT YOU DO NOT HAVE RESPONSIBILITY TO USE.**

**SAĞLIK VE GÜVENLİK İÇİN ZARAR VERİCİ EYLEMLERDE BULUNMAYINIZ.**  
**FOR SAFETY AND HEALTH, DO NOT ENGAGE IN DAMAGING ACTIONS AT THE DRILLING SITE.**

**SAĞLIK VE GÜVENLİK İÇİN DİKKAT!!!**  
**BE CAREFUL!!!**







# Our Commitment to Quality

>As **CUKURDERE DRILL**, we prioritize employer satisfaction and strive to fulfill our customers' diverse demands promptly and impeccably with our advanced, modern, and state-of-the-art machinery. Our objective is to deliver essential services through our experienced team within the evolving and expanding business landscape, positioning ourselves among the industry's leaders. **CUKURDERE DRILL**'s policy is to structure and execute our operations with a focus on customer satisfaction. We are confident that this commitment will foster quality and trust.

## Vision

>We are an innovative and continually evolving organization that leverages all technological advancements within our sector. We deliver reliable, employer-focused, and high-quality services, uphold the rights of both employers and employees, and cultivate a skilled workforce in the industry.

## Mission

>Our objective is to establish ourselves as a recognized organization capable of delivering reliable and high-quality services across all sectors in which we operate, leveraging our professionalism and collaborative efforts.

## Our tenets

- > Diversity,
- > Open-mindedness,
- > Mutual respect,
- > Clear goals,
- > Determination,
- > Leadership; are our corporate principles.

## Client Contentment

>Customer satisfaction regarding the services we offer reflects our level of professionalism. We deliver quality, reliable, healthy, and timely services to ensure customer satisfaction.

## Employee Engagement

>We emphasize to our employees that the primary contributor to success is teamwork and remind them that they are integral members of this team.

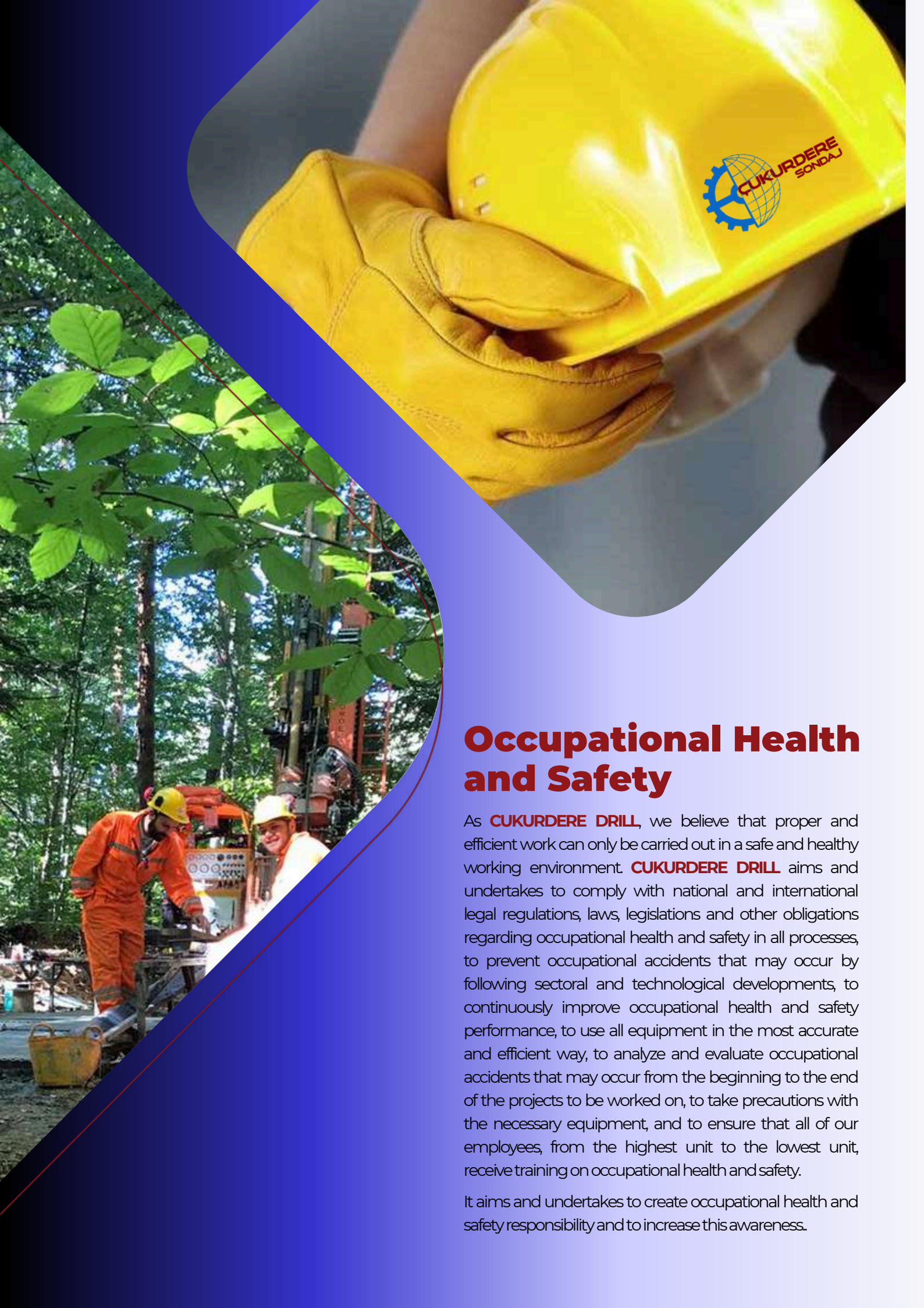




WE ARE BUILDING TOMORROW FROM TODAY WITH  
THE CONSCIOUSNESS OF OUR RESPONSIBILITY







## Occupational Health and Safety

As **CUKURDERE DRILL**, we believe that proper and efficient work can only be carried out in a safe and healthy working environment. **CUKURDERE DRILL** aims and undertakes to comply with national and international legal regulations, laws, legislations and other obligations regarding occupational health and safety in all processes, to prevent occupational accidents that may occur by following sectoral and technological developments, to continuously improve occupational health and safety performance, to use all equipment in the most accurate and efficient way, to analyze and evaluate occupational accidents that may occur from the beginning to the end of the projects to be worked on, to take precautions with the necessary equipment, and to ensure that all of our employees, from the highest unit to the lowest unit, receive training on occupational health and safety.

It aims and undertakes to create occupational health and safety responsibility and to increase this awareness.





**ÇUKURDERE  
SONDAJ**

**We are at your service with our machines equipped with the latest technology.**







## Environment

As **ÇUKURDERE DRILL**, based on sustainable development and environmental protection concepts, in all processes, we aim and undertake to:

- > with national and international legal regulations, environmental laws, legislation and other obligations,
- > Follow sectoral, scientific research and technological developments on the environment, prevent environmental pollution and continuously improve environmental performance,
- > Protect natural resources and use them in the most efficient way,
- > Keep under control and reduce environmental impacts that occur and may occur in projects from the beginning to the end,
- > Reduce or recycle wastes that will occur during the works as much as possible,
- > Increase the environmental responsibility awareness of all our employees from the highest to the lowest units by providing environmental training to all our employees.





### **Our Offerings**

The primary philosophy of our drilling team, composed of experienced and committed drillers at **ÇUKURDERE DRILL**, is:

- > Excellence,
- > Eco-friendly,
- > In a manner that facilitates the employer in attaining their objectives to deliver drilling services in collaboration with the employer.

**ÇUKURDERE DRILL** core; RC; reverse circulation and multi-functional drilling machines is providing.

- > Wireline Surface Core Drilling
- > Wireline Underground Core Drilling
- > Air and Mud Rotary Drilling
- > Conventional Core Drilling
- > Reverse Circulation (RC) Drilling
- > RAB Drilling
- > Rapid Drilling for Grade Control



SQR CERTIFICATION



# Sertifika

CERTIFICATE

ÇUKURDERE SONDAJ SAN. VE TİC. LTD. ŞTİ.

OSTİM OSB MAH. 11252 SK. NO: 10 YENİMAHALLE/ANKARA/TÜRKİYE

## ISO 9001:2015

Kapsam/Scope

SONDAJ EKİPMANLARI VE YEDEK PARÇALARININ SATIŞI , SONDAJ VE MÜHENDİSLİK HİZMETLERİ

SALES OF DRILLING EQUIPMENT AND SPARE PARTS, DRILLING AND ENGINEERING SERVICES

EA : 1-28-29-34

Bu sertifika ile yukarıda adı geçen kuruluşun Kalite Yönetim Sistemi gerekliliklerini karşıladığı tasdik olunur.  
This is to certify that the above mentioned company meets the requirement of Quality Management System.

Sertifika No / Certification Number : MTS-41 059  
Başlangıç Tarihi / Date of Initial Reg. : 11.11.2024  
Büyük Tazili / Date of Certificate : 11.11.2024  
Geçerlilik Tarihi / Date of Expiry : 10.11.2025  
Revizyon / Revision : 000

Bu sertifika herhangi bir belgenin şartlarına uygun ve yolda ve 1 her yıl olmak üzere güncellenmelidir.  
Bu belge geçerli kalmadıkça ya da başka sertifikasyon kuruluşuna kaydedilene kadar geçerlidir.  
This certificate is valid for the rest of the three-year certification period if the organization complies with the certification requirements and the surveillance audits to be carried out at least once a year as stipulated accordingly.

Genel Müdür / General Manager



SİGMACERT ULUSLARARABİ BELGELENDİRME EĞİTİM VE TEST HİZMETLERİ LTD. ŞTİ.  
Büyükdere Mahallesi Saray Bulvarı İşyeri No: 18/75 Etiler/Beşiktaş  
www.sigmacert.com.tr | info@sigmacert.com.tr | +90 312 386 00 00  
YS.194.129 Rev.01 18.09.2024



SQR CERTIFICATION



# Sertifika

CERTIFICATE

ÇUKURDERE SONDAJ SAN. VE TİC. LTD. ŞTİ.

OSTİM OSB MAH. 11252 SK. NO: 10 YENİMAHALLE/ANKARA/TÜRKİYE

## ISO 14001:2015

Kapsam/Scope

SONDAJ EKİPMANLARI VE YEDEK PARÇALARININ SATIŞI , SONDAJ VE MÜHENDİSLİK HİZMETLERİ

SALES OF DRILLING EQUIPMENT AND SPARE PARTS, DRILLING AND ENGINEERING SERVICES

EA : 1-28-29-34

Bu sertifika ile yukarıda adı geçen kuruluşun Çevre Yönetim Sistemi gerekliliklerini karşıladığı tasdik olunur.  
This is to certify that the above mentioned company meets the requirement of Environmental Management System.

Sertifika No / Certification Number : MTS-41 060  
Başlangıç Tarihi / Date of Initial Reg. : 11.11.2024  
Büyük Tazili / Date of Certificate : 11.11.2024  
Geçerlilik Tarihi / Date of Expiry : 10.11.2025  
Revizyon / Revision : 000

Bu sertifika herhangi bir belgenin şartlarına uygun ve yolda ve 1 her yıl olmak üzere güncellenmelidir.  
Bu belge geçerli kalmadıkça ya da başka sertifikasyon kuruluşuna kaydedilene kadar geçerlidir.  
This certificate is valid for the rest of the three-year certification period if the organization complies with the certification requirements and the surveillance audits to be carried out at least once a year as stipulated accordingly.

Genel Müdür / General Manager



SİGMACERT ULUSLARARABİ BELGELENDİRME EĞİTİM VE TEST HİZMETLERİ LTD. ŞTİ.  
Büyükdere Mahallesi Saray Bulvarı İşyeri No: 18/75 Etiler/Beşiktaş  
www.sigmacert.com.tr | info@sigmacert.com.tr | +90 312 386 00 00  
YS.194.129 Rev.01 18.09.2024

SQR CERTIFICATION



# Sertifika

CERTIFICATE

ÇUKURDERE SONDAJ SAN. VE TİC. LTD. ŞTİ.

OSTİM OSB MAH. 11252 SK. NO: 10 YENİMAHALLE/ANKARA/TÜRKİYE

## ISO 45001:2018

Kapsam/Scope

SONDAJ EKİPMANLARI VE YEDEK PARÇALARININ SATIŞI , SONDAJ VE MÜHENDİSLİK HİZMETLERİ

SALES OF DRILLING EQUIPMENT AND SPARE PARTS, DRILLING AND ENGINEERING SERVICES

EA : 1-28-29-34

Bu sertifika ile yukarıda adı geçen kuruluşun Sağlık ve Güvenlik Yönetim Sistemi gerekliliklerini karşıladığı tasdik olunur.  
This is to certify that the above mentioned company meets the requirement of Occupational Health & Safety Management System.

Sertifika No / Certification Number : MTS-41061  
Başlangıç Tarihi / Date of Initial Reg. : 11.11.2024  
Büyük Tazili / Date of Certificate : 11.11.2024  
Geçerlilik Tarihi / Date of Expiry : 10.11.2025  
Revizyon / Revision : 000

Bu sertifika herhangi bir belgenin şartlarına uygun ve yolda ve 1 her yıl olmak üzere güncellenmelidir.  
Bu belge geçerli kalmadıkça ya da başka sertifikasyon kuruluşuna kaydedilene kadar geçerlidir.  
This certificate is valid for the rest of the three-year certification period if the organization complies with the certification requirements and the surveillance audits to be carried out at least once a year as stipulated accordingly.

Genel Müdür / General Manager



SİGMACERT ULUSLARARABİ BELGELENDİRME EĞİTİM VE TEST HİZMETLERİ LTD. ŞTİ.  
Büyükdere Mahallesi Saray Bulvarı İşyeri No: 18/75 Etiler/Beşiktaş  
www.sigmacert.com.tr | info@sigmacert.com.tr | +90 312 386 00 00  
YS.194.129 Rev.01 18.09.2024





## MRC 1200 M

### TECHNICAL SPECIFICATIONS

Drill Angle	45°-90°				RC-M
Rod Diameter	PWL	HWL	NWL	BWL	5"
Depth (m)	650	1000	1550	2050	400
Depth (ft)	2132	3280	5084	6724	1312





## MDC 500

Due to its compact design and telescopic tower, it is capable of delivering enhanced capacity core drilling services in forested and confined environments. It is mounted on a pallet for transportation across challenging terrain.

### TECHNICAL SPECIFICATIONS

Drill Angle	45°-90°			
Rod Diameter	PWL	HWL	NWL	BWL
Depth(m)	650	1000	1550	2050
Depth(ft)	2132	3280	5084	6724





## MDC 2500

### TECHNICAL SPECIFICATIONS

Drill Angle	45°-90			
Rod Diameter	BWL	NWL	HWL	PWL
Depth(m)	3000	2500	1900	1000
Depth(ft)	9842	8202	6233	3280





## MDC 1000

### TECHNICAL SPECIFICATIONS

Drill Angle	45°-90			
Rod Diameter	BWL	NWL	HWL	PWL
Depth(m)	3000	2500	1900	1000
Depth(ft)	9842	8202	6233	3280





2025

KIRDERE  
SONDAJ



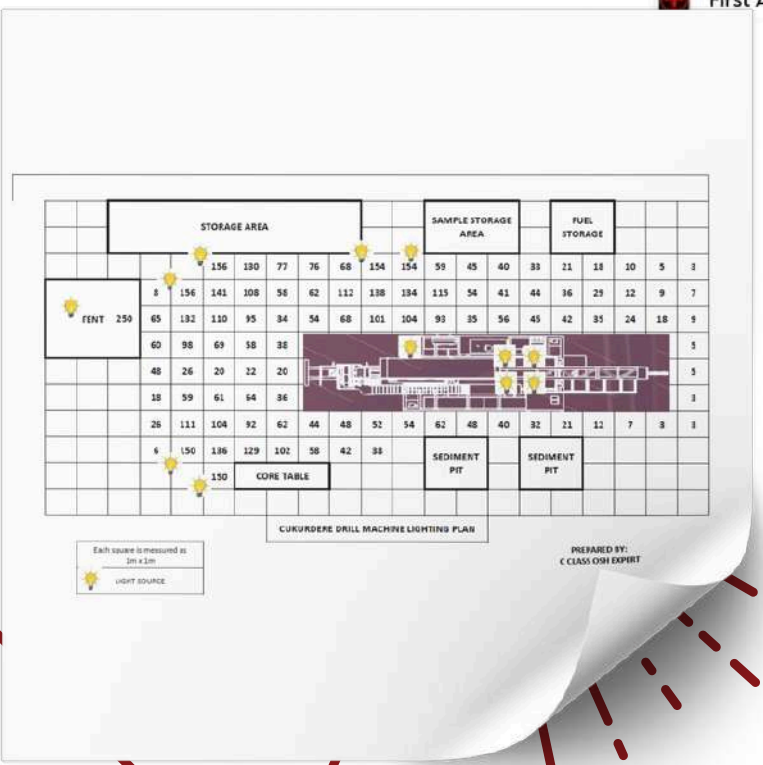
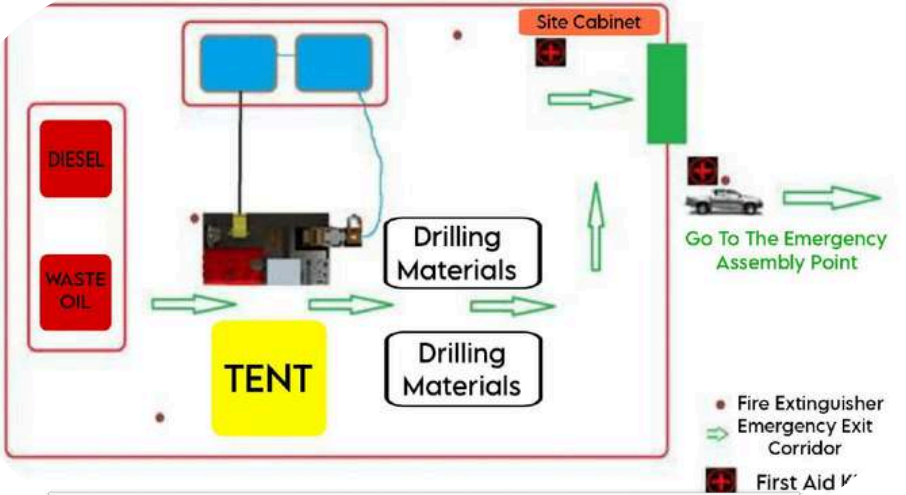
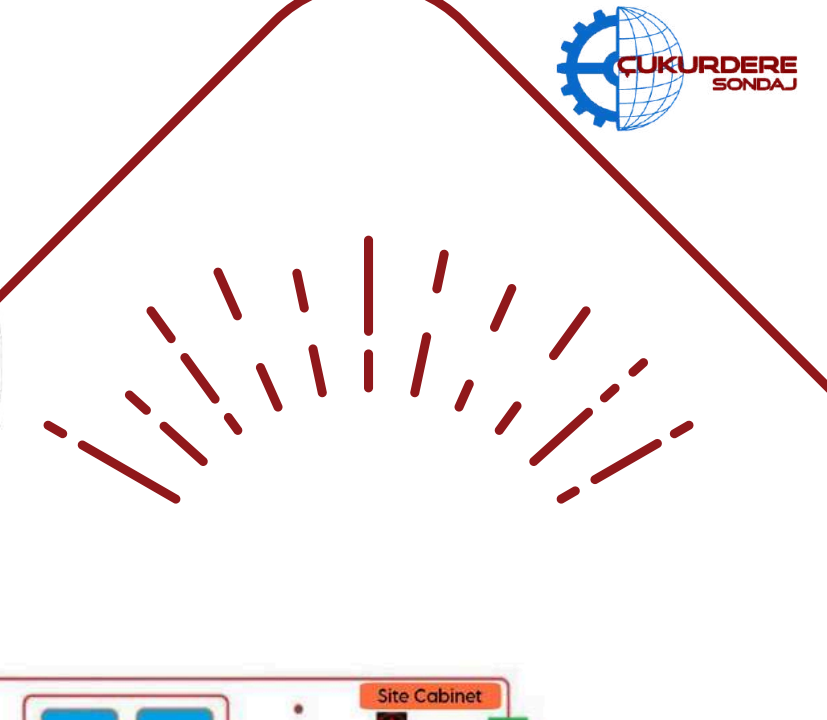
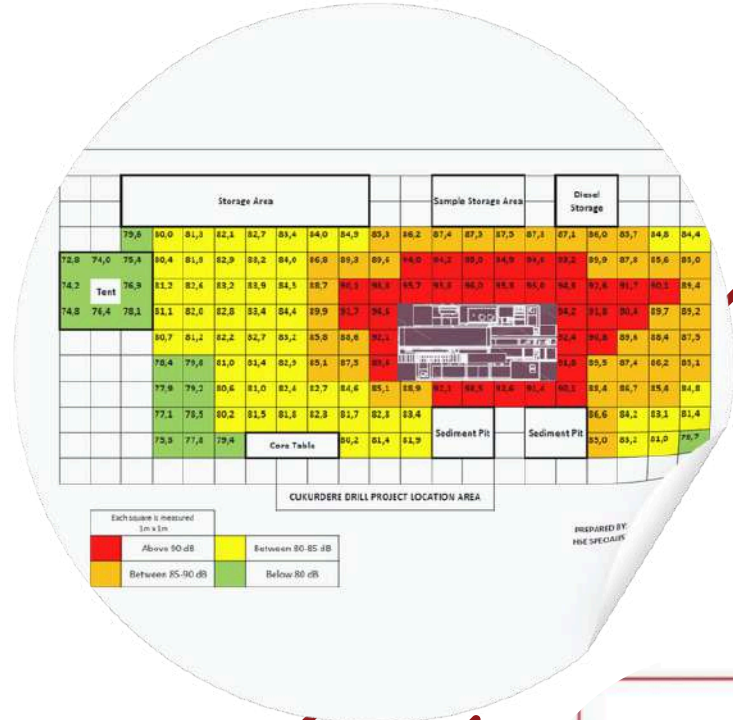


From our 1104 m deep well



We explore the potential..





**safety first**





# RC & DIAMOND CORE DRILLING SERVICES

[www.cukurderesondaj.com.tr](http://www.cukurderesondaj.com.tr)







LOW COST HIGH EFFICIENCY





Two hundred and fifty thousand meters of core and RC drilling per year, both national and international



Ostim OSB Mah. 1125/2. Sokak No: 10 Yenimahalle, Ankara-TÜRKİYE

+90 312 354 77 71  +90 312 354 77 71

cukurdere@cukurderesondaj.com.tr

[www.cukurderesondaj.com.tr](http://www.cukurderesondaj.com.tr)